

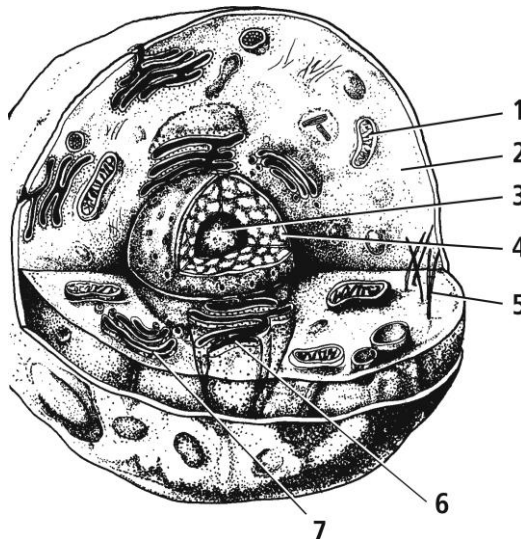
## Study Guide Structures and Organelles

In your textbook, read about structures and organelles.

Label the diagram of a typical animal cell. Use these choices.

|               |                       |                 |              |
|---------------|-----------------------|-----------------|--------------|
| cytoplasm     | endoplasmic reticulum | Golgi apparatus | microtubules |
| mitochondrion | nucleolus             | nucleus         |              |

1. \_\_\_\_\_
2. \_\_\_\_\_
3. \_\_\_\_\_
4. \_\_\_\_\_
5. \_\_\_\_\_
6. \_\_\_\_\_
7. \_\_\_\_\_



If the statement is true, write true. If the statement is false, replace the italicized word or phrase to make it true.

8. Microtubules are long, hollow protein cylinders that form *a rigid skeleton for the cell*.  
\_\_\_\_\_
9. The *Golgi apparatus* contains most of the cell's DNA.  
\_\_\_\_\_
10. The nucleolus is the structure that produces *sugars*.  
\_\_\_\_\_
11. The *endoplasmic reticulum* is a stack of membranes that packages proteins into sacs called vesicles.  
\_\_\_\_\_
12. The *cytoplasm* is the semifluid internal environment of the cell.  
\_\_\_\_\_